

Global Disaster Weather Monitoring and Forecast News

No.56

World Meteorological Center Beijing

15, Apr. 28, 2026

Bangladesh and Northeast India Experience Persistent Heavy Rainfall

It is forecasted that in the coming week, influenced by the Southern Branch Trough (Figure 1), parts of Bangladesh, Bhutan, Nepal, northeastern India, and northern Myanmar will experience persistent heavy rainfall. The cumulative precipitation during this period is expected to range from 100 to 180 millimeters, with localized areas receiving 200 to 350 millimeters (Figure 2). These regions will also be accompanied by severe convective weather, including short-duration intense rainfalls and thunderstorms with strong winds. Due to the prolonged duration and significant cumulative rainfall in Bangladesh, northeastern India, and northern Myanmar, the risk of flood disasters is high. Caution is advised to mitigate the risks of secondary disasters such as flash floods and landslides.

850hPa风场+500hPa高度场

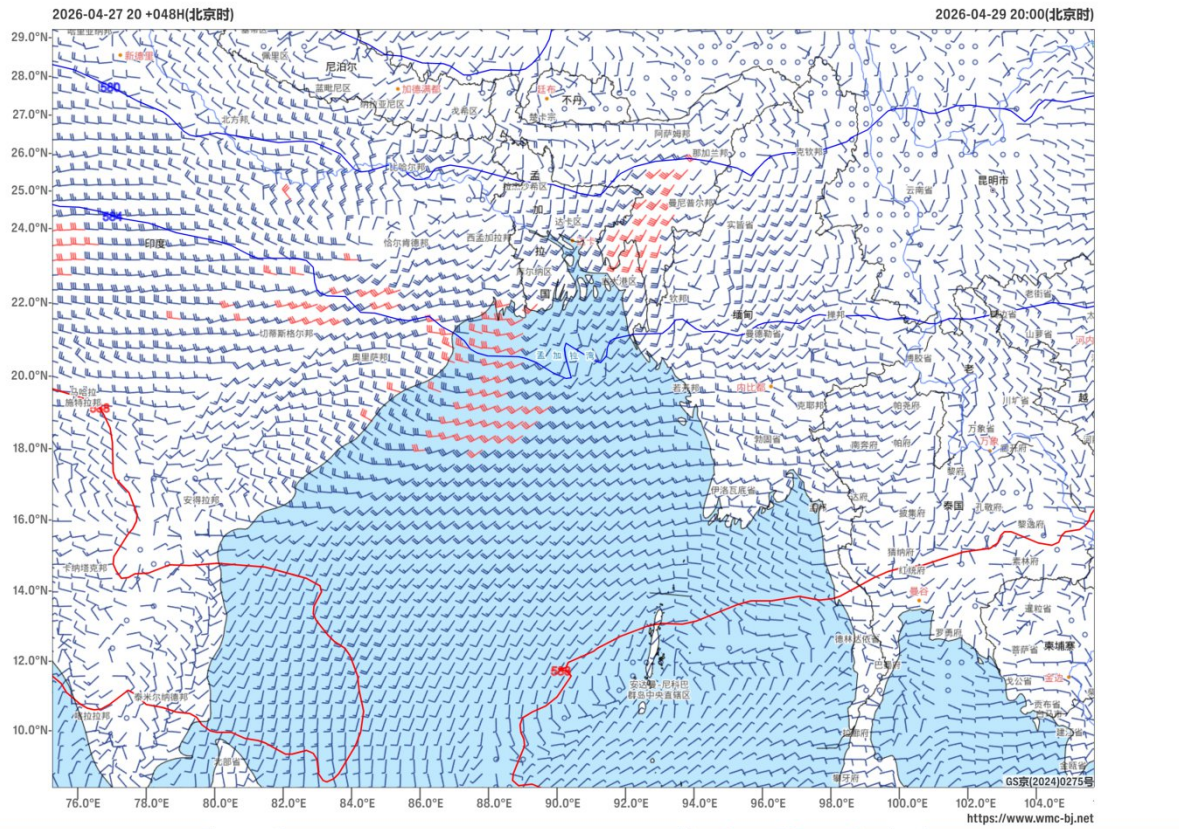


Figure 1: Forecast of 500 hPa Geopotential Height (contours, units: dagpm) and 850 hPa Wind Field (wind barbs, units: m/s) at 20:00 (Beijing Time) on April 29, 2026

过程降水

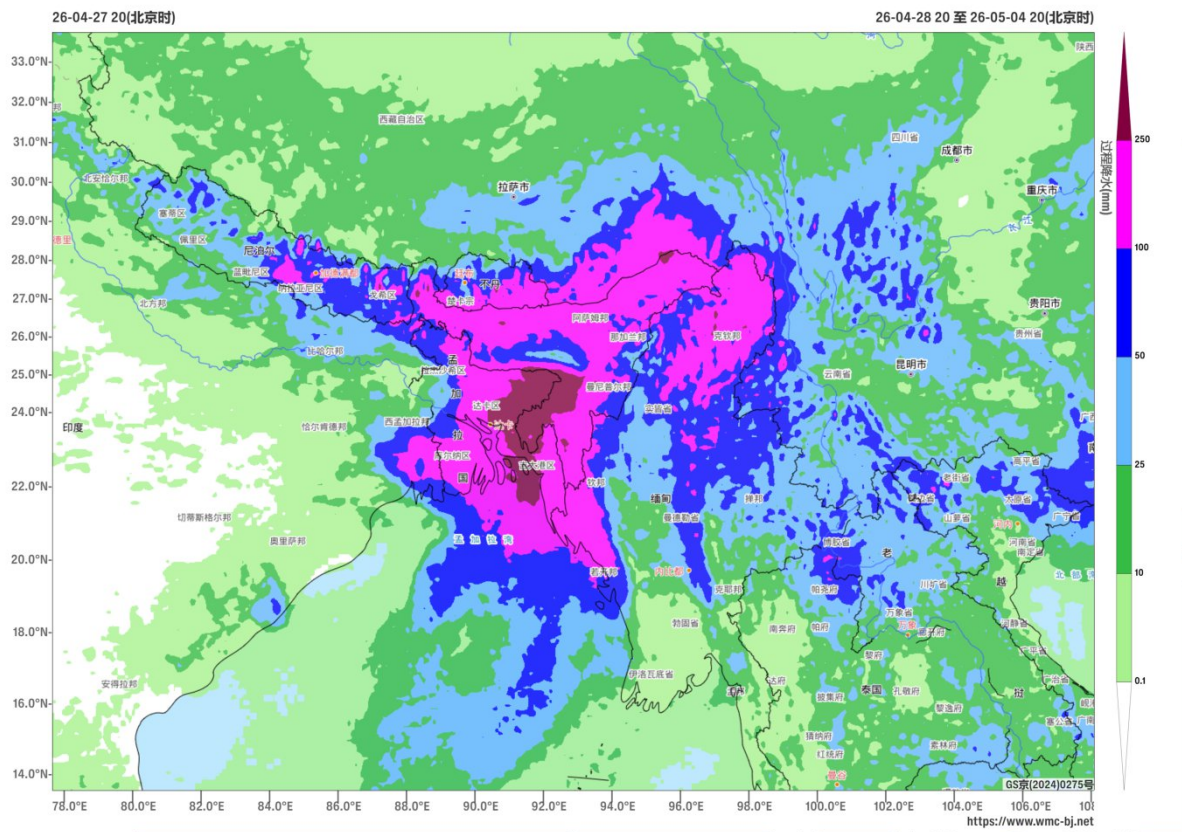


Figure 2: Forecast of Accumulated Precipitation from 20:00 on April 28, 2026, to 20:00 on May 4, 2026 (Beijing Time), with color shading indicating millimeters (mm)

<https://www.wmc-bj.net>

Author: Lian Zhihua

Reviewer: Guan Yue

English reviewer: Wang Yi Kan

Issue approver: Dai Kan