

Global Disaster Weather Monitoring and Forecast News

No.159

World Meteorological Center Beijing

11, Nov. 24, 2025

Tropical Depression to Bring Severe Rain and Wind to the Philippines

On the morning of November 24, a tropical depression was located near the eastern coast of Mindanao, the Philippines. It is expected that it will move west-northwestward through the central part of the Philippine Islands. It may intensify into Typhoon No. 27 of this year within the next 24 hours, with the maximum intensity reaching that of a strong tropical storm (Figure 1). Over the next three days, the Philippines will experience heavy to torrential rain, with localized extremely heavy downpours (Figure 2), accompanied by strong winds of 6-7 levels, with gusts reaching 8-9 levels (Figure 3). Additionally, influenced by the tropical low-pressure system, regions including the Malay Peninsula, Sumatra, Sri Lanka, and southeastern India will continue to face heavy to torrential rain, with localized extremely heavy downpours. Most areas will accumulate rainfall of 100-160 mm, with some regions reaching 200-250 mm, and the maximum could exceed 400 mm (Figure 4). Attention should be given to the adverse impacts of the severe weather on local power facilities, transportation, and other

sectors, as well as the prevention of secondary disasters such as flooding, landslides, and mudslides that may be triggered by the heavy rainfall.

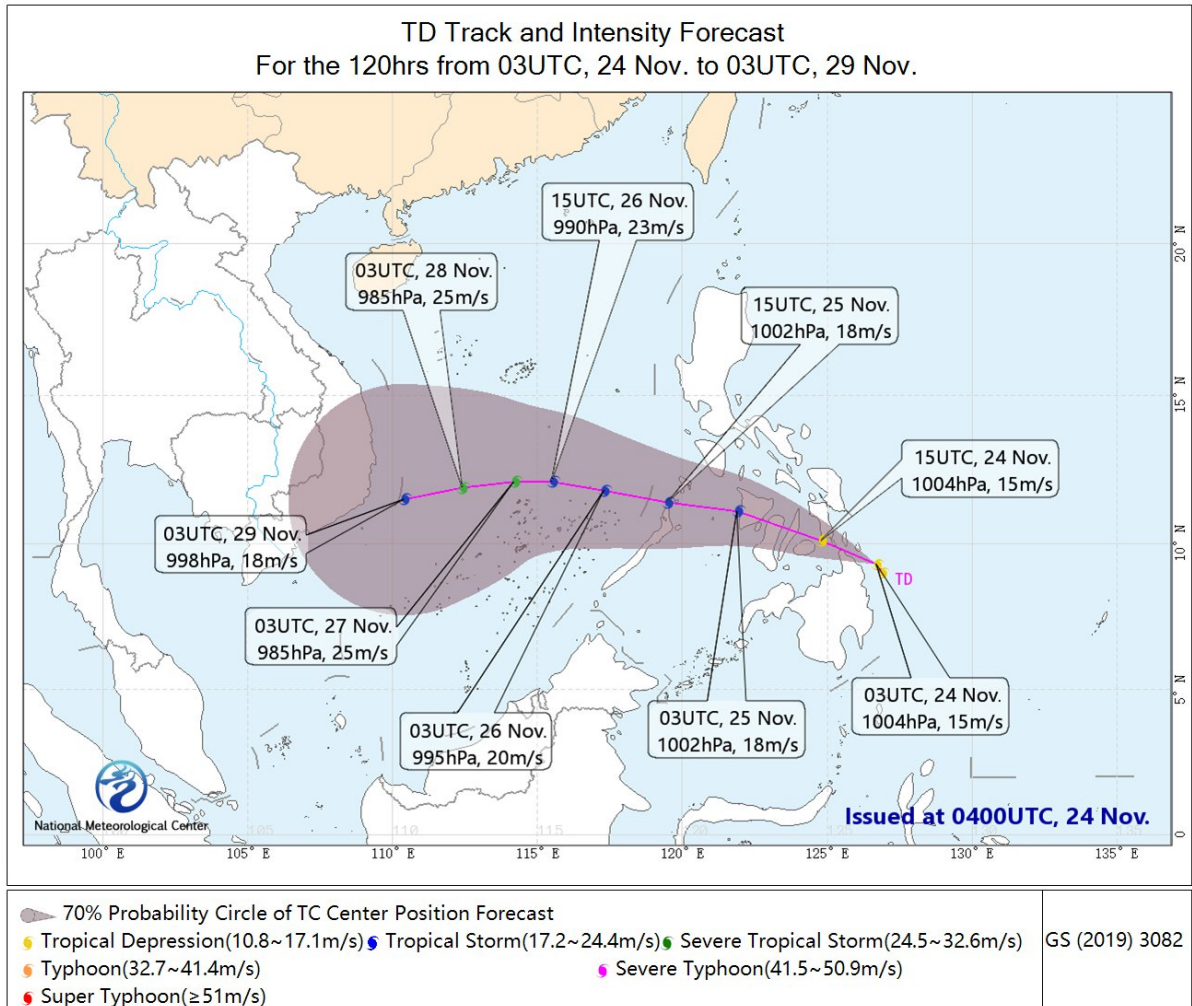


Figure 1 120-Hour Tropical Depression Track Probability Forecast Map

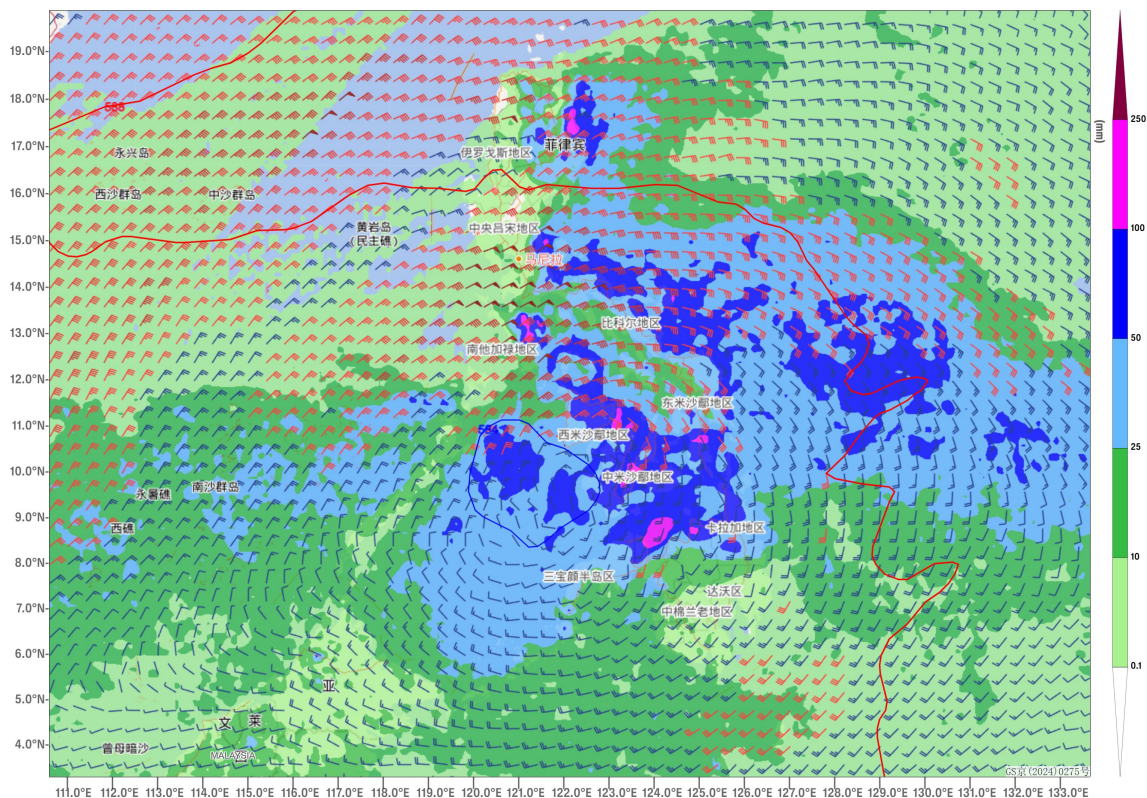


Figure 2 24-hour Precipitation Pattern at 08:00 (BST, same below) on November 25 (Unit: mm)

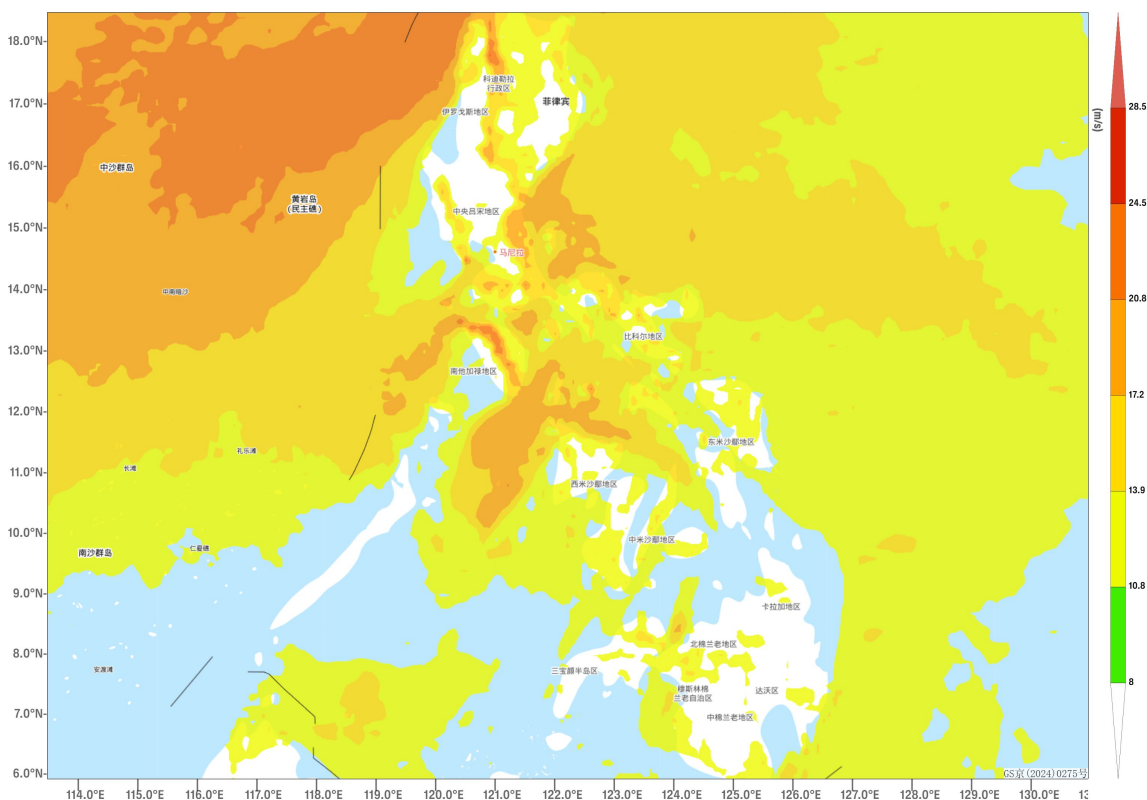


Figure 3 Maximum Gust Wind Speed in 6 Hours at 14:00 on November 25 (Unit: m/s)

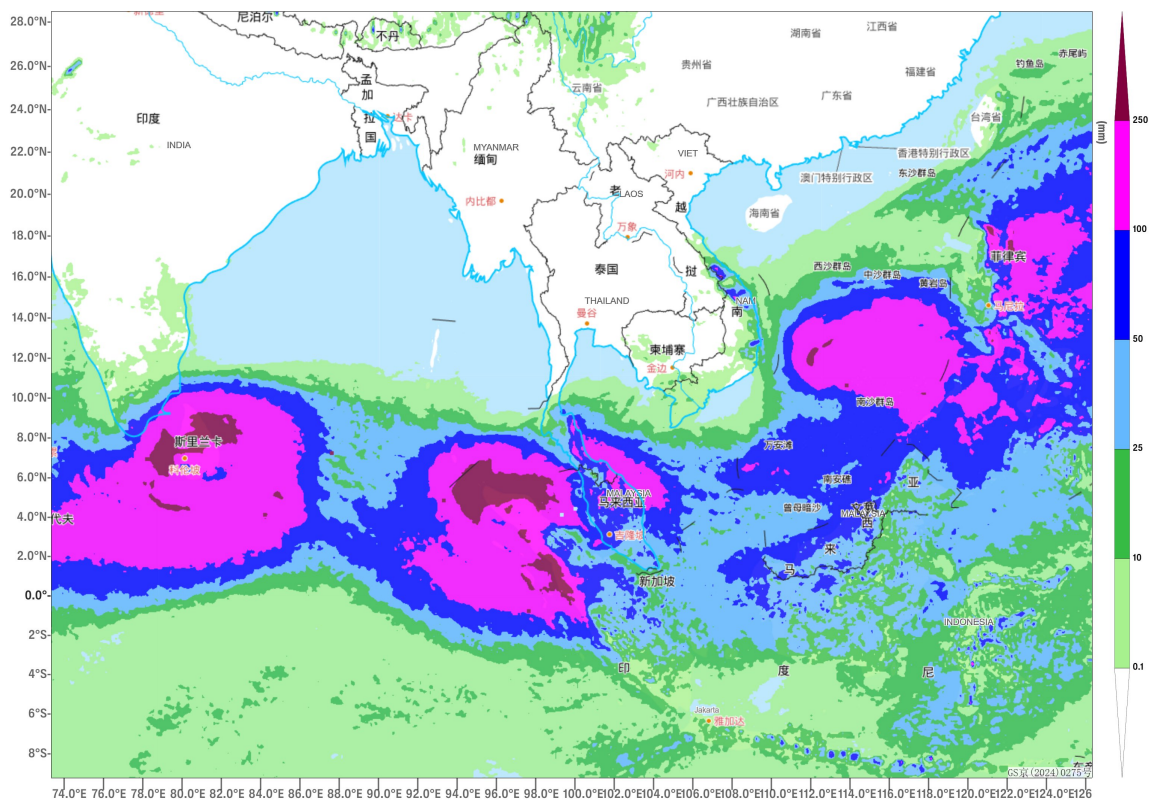


Figure 4 Forecasted Accumulated Precipitation from 08:00 on November 24 to 20:00 on November 27 (Unit: mm)

Author: Xu Xianhuang, Min Ying, Lv Xinyan
 English reviewer: Wang Yi
 Kan

Reviewer: Guan Yue
 Issue approver: Dai Kan